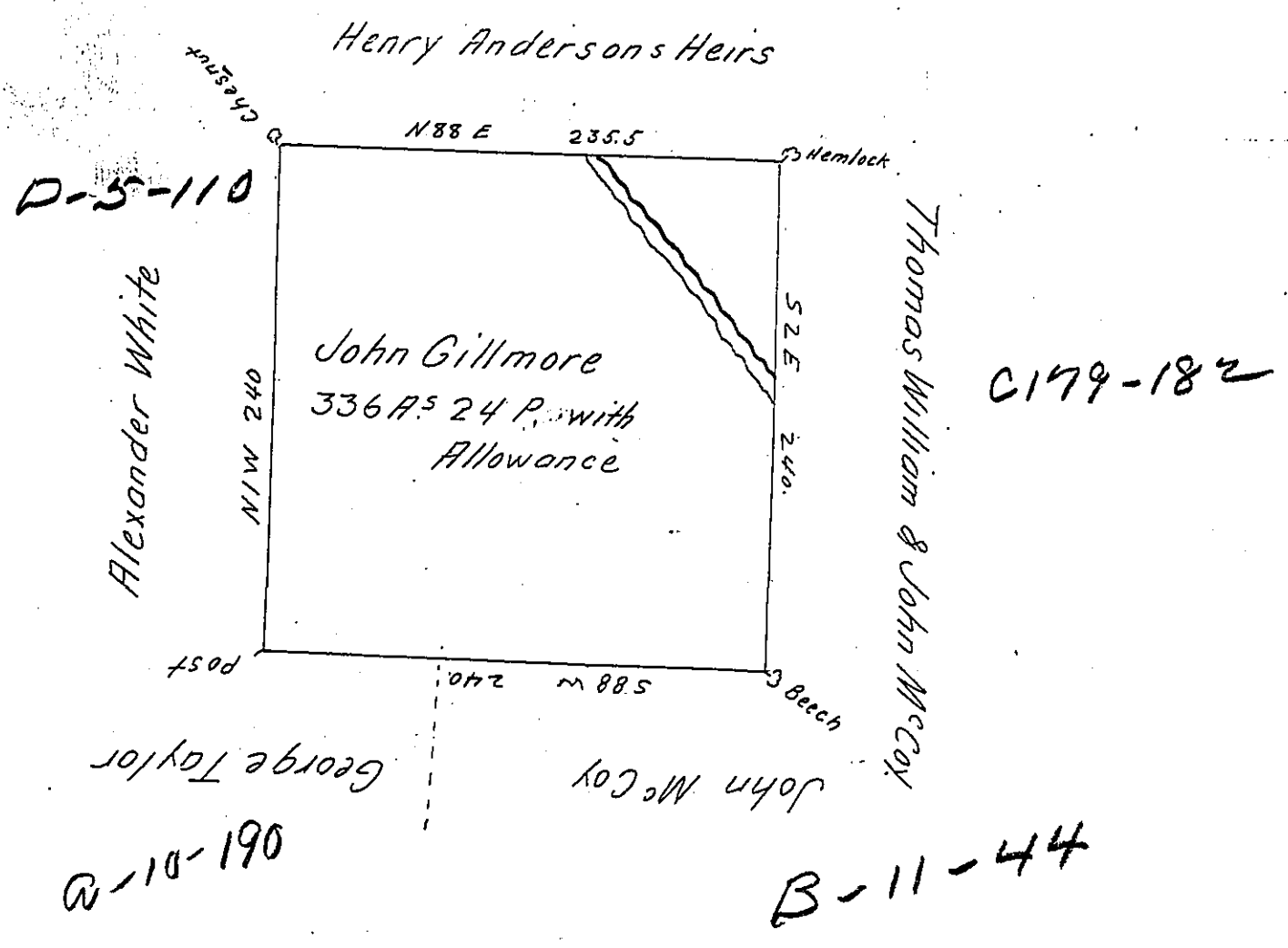


C-2-91



Situate in Wolfcreek Township Mercer County Pennsa on Swan-
 p creek Containing three hundred and thirty Six Acres and Alla-
 wance of Six percent for Roads &c^o Surveyed for John Gillmore
 December 8th 1839 in pursuance of his Actual Settlement Residence
 & Improvement there on

Jacob Sallade Esq^r By me
 Surveyor General John Findley D. S.

IN TESTIMONY that the above is a copy of the original remaining on file in
 the Department of Internal Affairs of Pennsylvania, made
 conformably to an Act of Assembly approved the 16th day of
 February, 1833, I have hereunto set my Hand and caused
 the Seal of said Department to be affixed at Harrisburg,
 this fourth day of January 1905.

Loac B. Benson
 Secretary of Internal Affairs.